

Data sheet

Densit® Densulate

internally insulated wear linings

Densulate insulated wear-resistant linings are designed to protect components against erosive wear, while at the same time reducing heat loss by radiation. They consist of a Densit® wear protection lining installed over an underlying insulation layer.

Features

- Longer component life.
- Reduction of heat loss by radiation.
- Operating temperatures typically up to 1200°C (2190°F).
- Combined internal insulation and wear protection, eliminates the need for external insulation.
- Lower construction costs than alternative insulation methods.
- Reduction in component weight and size.
- Easy installation and low maintenance.

Mortar is used to fill up gaps. The thickness of insulation material used depends upon the operating temperature and acceptable heat loss. Thermal conductivity at 600°C = 0.10 W/m K.

WEAR PROTECTION COMPONENT

The type and thickness of Densit® wear protection depends upon process parameters including temperature and media type, and component geometry and size.

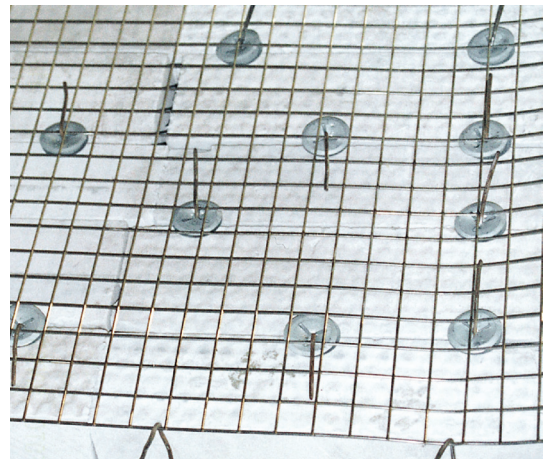
Recommended materials

For further information please refer to the PRODUCTS and the TECHNICAL INFORMATION sections of the catalogue and to the DENSIT® INSTALLATION MANUAL.

Please contact Wear-Concepts for further information.

INSULATION COMPONENT

The Densulate Super Isol material is hard enough to tolerate application of the Densit® lining. To assure waterpellent, Densit® Bonding Compound is applied to the surface after fixing. Densulate Super Isol



*Your Complete Resource for
Innovative Wear Solutions*

1-816-587-1923
fax: 1-816-587-2055

1-888-4WEARCON
email: densit@wearcon.com

vs 01.0

www.wearcon.com



Densulate

PINS AND SELF-FASTENING CLIPS

For operating temperatures up to 400°C (750°F), mild steel or stainless steel components may be used.

For operating temperatures over 400°C (750°F), only stainless steel components type 1.4301 may be used.

Densulate pins: Ø3 x 85 mm

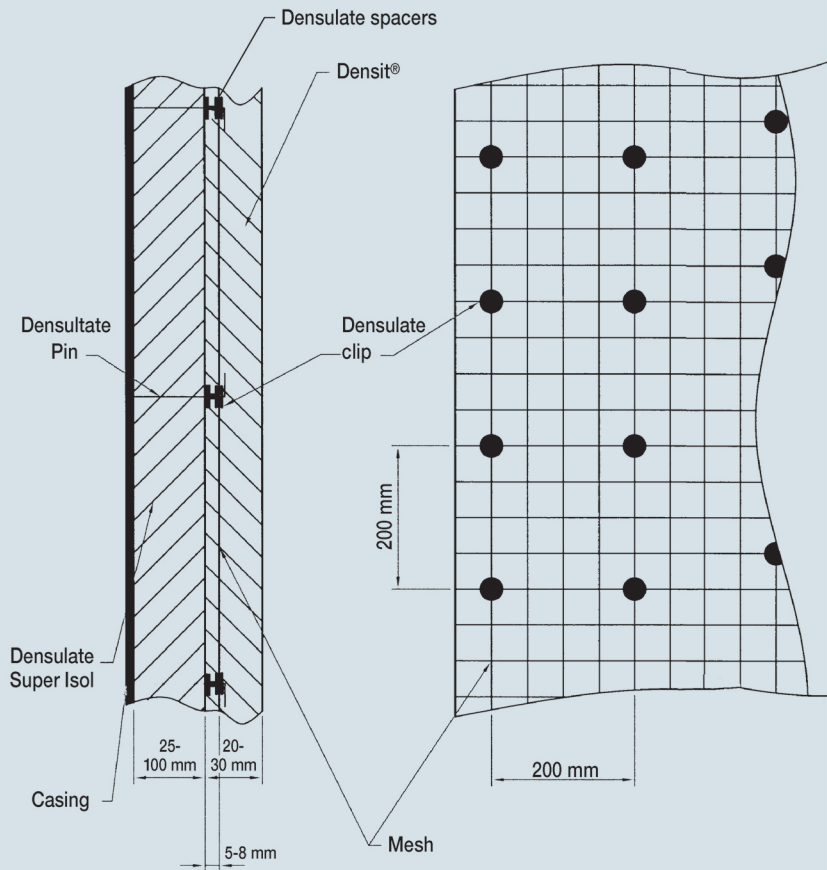
Densulate clips:

ID 3 mm
OD 38 mm

SPECIFICATION

- Weld pins to inner surface of component.
- Install and fix insulation placing alpins Densulate clips over mesh.
- Install mesh placing self-fastening clips and spacer at pins under mesh.
- Fix mesh by bending excess length of pin neatly into insulation.
- Apply Densit® Bonding Compound.
- Apply Densit® wear protection.
- Apply Densit® Curing Compound.
- For drying materials, please follow the Densit® Drying Curve in the Densit® Installation Manual.

Structure of Densulate



The diagram shows the installation of insulation, pins, clips, mesh and Densit® wear-resistant lining.

Your Complete Resource for
Innovative Wear Solutions

1-816-587-1923
fax: 1-816-587-2055

1-888-4WEARCON
email: densit@wearcon.com

www.wearcon.com

